

ADVISOR COMMERCIAL MORTGAGE

Is your company or business in need of financing real estate?

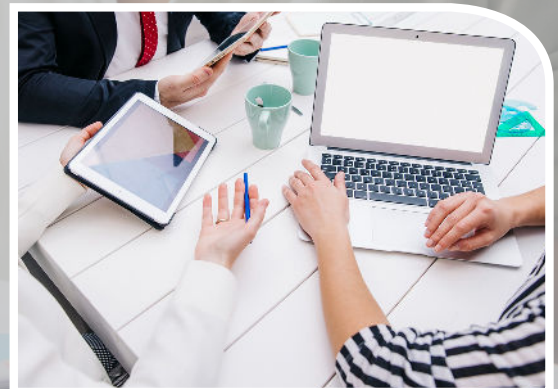
Advisor Mortgage Inc, aka Advisor Commercial Mortgage has been in the Business since 1990, specializing in facilitating commercial and industrial real estate loans, primarily through non-banking lenders.

Our transactions are designed to close, based primarily on collateral value of the real estate, although other assets can be used to supplement the security, if necessary. Our conventional loan programs are often not banks but compare in terms.

Why us?

We have been around for 33 years assisting businesses and companies resolve problems and creating opportunities, often with less complications or time spent, than through a bank.

Our team can quickly determine whether your request is appropriate for our services and beneficial to your company.



We also facilitate financing for companies looking for both long-term conventional financing as well as the quicker, faster, non-conventional lending approach.

- Low loan to Value allows our lenders more flexibility to lend, but typically they are shorter term loans.
- Most of our Asset Based loans can be evaluated and closed at a much faster rate than a conventional lender.